

ELEGANT, EFFICIENT, ECONOMICAL SOLAR POWER SYSTEMS

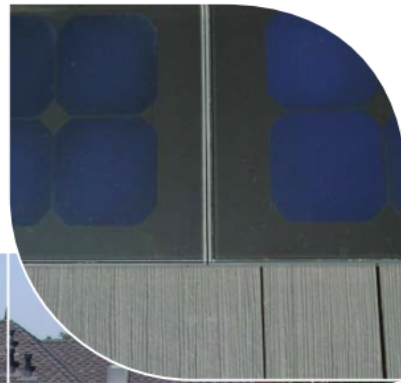
Open Energy's SOLARSAVE[®] Roofing Tile is a unique product that maintains the natural look of your property while generating clean, safe, efficient electricity from the sun. SOLARSAVE[®] Roofing Tile is easy to install on residential, commercial, or institutional sloped roofs.

BENEFITS AT A GLANCE

- Blends seamlessly into existing roofline
- Increases the resale value of your property
- Significantly reduces monthly energy bill
- Provides quiet, reliable power generation
- Tax credits and other incentives available
- Payback investment in about 10 years
- Reduces pollution and green house gas emissions
- Provides safe, sustainable energy solutions

FEATURES AT A GLANCE

- Edge profiles naturally shed water
- Durable low voltage system safe to install and maintain
- Modular, expandable system can be energy customized
- Snow load capacity over 200 pounds per square foot
- Wind load rating up to 125 m.p.h. with clips installed
- Class A Fire Rated
- CSA Certified to UL 1703, 600 VDC
- 25-year warranty to produce 80% power output
- Inverter high conversion ratio of AC to DC (93%)
- Different colors: black, red/brown, blue/gray



Residential Application

Crone Residential Home, San Jose, CA

INSTALLATION AT A GLANCE

- Smaller tiles allow for a better fit into tight roof areas; more modular
- Blends into tile roof systems in form and color
- Water easily flows off of the tile edge
- Low voltage design allows for safer wiring in walls
- No maintenance
- Silently generates clean power
- Compatible with premium quality system components

EFFICIENCY AT A GLANCE

Each square foot of a SOLARSAVE® Roofing Tile generates approximately 10 watts of AC electricity when operating in full sunlight. A 400 square foot rooftop installation will produce 4,000 watts (4 kW), enough energy to meet the power requirements of a typical 2,500 square foot home. This includes powering air conditioning, lighting, the water heater, and typical household appliances.

SAVINGS AT A GLANCE

Most 50 states and the District of Columbia currently offer financial incentives to support your solar energy investment. As of July 2006, California provides a \$2.60 per watt rebate. New Jersey pays up to \$5.50 per watt, which can cover over half of the cost of a PV system. Colorado, Illinois and Maine have similarly aggressive programs. The Database of State Incentives for Renewable Energy (www.dsireusa.org) is an excellent source for information regarding the various incentive programs, which can include net metering, cash rebates, accelerated depreciation, tax incentives, feed-in tariffs, and renewable energy credits.

TECHNICAL SPECIFICATION AT A GLANCE

Product description	High efficiency crystalline Photovoltaic cells encapsulated in multi-layered lamination of glass, EVA, Tedlar®, and polycarbonate high performance plastic to create the tile structure.			
Color availability	Black, Red, Brown to approximately match colors of standard cement tiles			
Installation weight	400 lbs. per 100 sq. ft., 12 lbs. per tile			
Material	Polycarbonate			
Roofing applications	New construction and retrofit; residential and commercial sloped roofs			
Actual size	17" x 36" x 1"			
Exposed size	13" x 35" x 1"			
Weight	12 lbs.			
Module encapsulation	Glass, EVA, Tedlar®			
Connector type	Multi contact M/F			
Output	Per 100 sq. ft.:	Black: 1150 watts DC	Red: 1050 watts DC	Brown: 1050 watts DC
	Per tile:	Black: 35 watts DC	Red: 30 watts DC	Brown: 30 watts DC
Roofing information	Head lap: 3 to 4 in.	Exposure: 12 to 13.5 in.	Storm hook locations within the overlap	
Efficiency under STC	Black: 20%	Red and Brown: 12%		
Annual kWp per kWp	Range: maximum 1800 to minimum 800. (Depends hook locations and applications)			
Area per kWp	Black: 100 sq. ft.	Red: 140 sq. ft.	Brown: 140 sq. ft.	
Nominal power Wp	Black: 35 watts DC	Red: 30 watts	Brown: 30 watts DC	
Max power current	5.3A - BLACK TILES ONLY			
Short circuit current	5.6A - BLACK TILES ONLY			
Open circuit voltage	8.0 VDC - BLACK TILES ONLY			
Max power voltage	6.6 VDC - BLACK TILES ONLY			
Bypass diode	1 per tile			
Max. system voltage	600V			
Operating temperature	-40 to + 160° F			

WARRANTY

25-year warranty on 80% power output

CERTIFICATIONS

Class A Fire Rated

600 VDC

CSA certified to UL 1703



Open Energy Corporation (OTC:BB OEGY) is a San Diego based company dedicated to the development of renewable energy solutions. Our mission is to enhance life by harnessing the power of the sun.